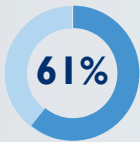




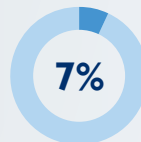
# BUSIA COUNTY PROFILE

## Population

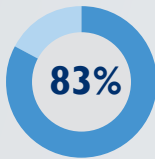
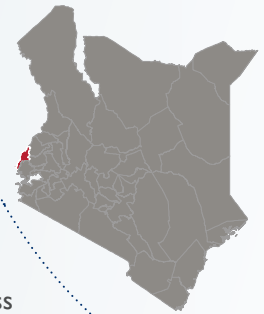
**893,681**



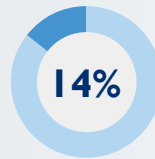
of the population  
accessing water from  
an improved source



of rural households  
accessing safe water



of the population has  
access to a basic latrine



of the population has access  
to an improved latrine

## USAID INVESTMENTS IN THE COUNTY



### Water Access

**49,483**

people accessing basic and improved water  
as a result of USAID support



### Capacity Development

**380**

service provider staff from **20 small and medium water projects** and the **Busia Water and Sewerage Services Company** trained on improved service provision



### Sanitation Access

**10,065**

people accessing improved sanitation as a  
result of USAID support



### Environmental Protection

**11**

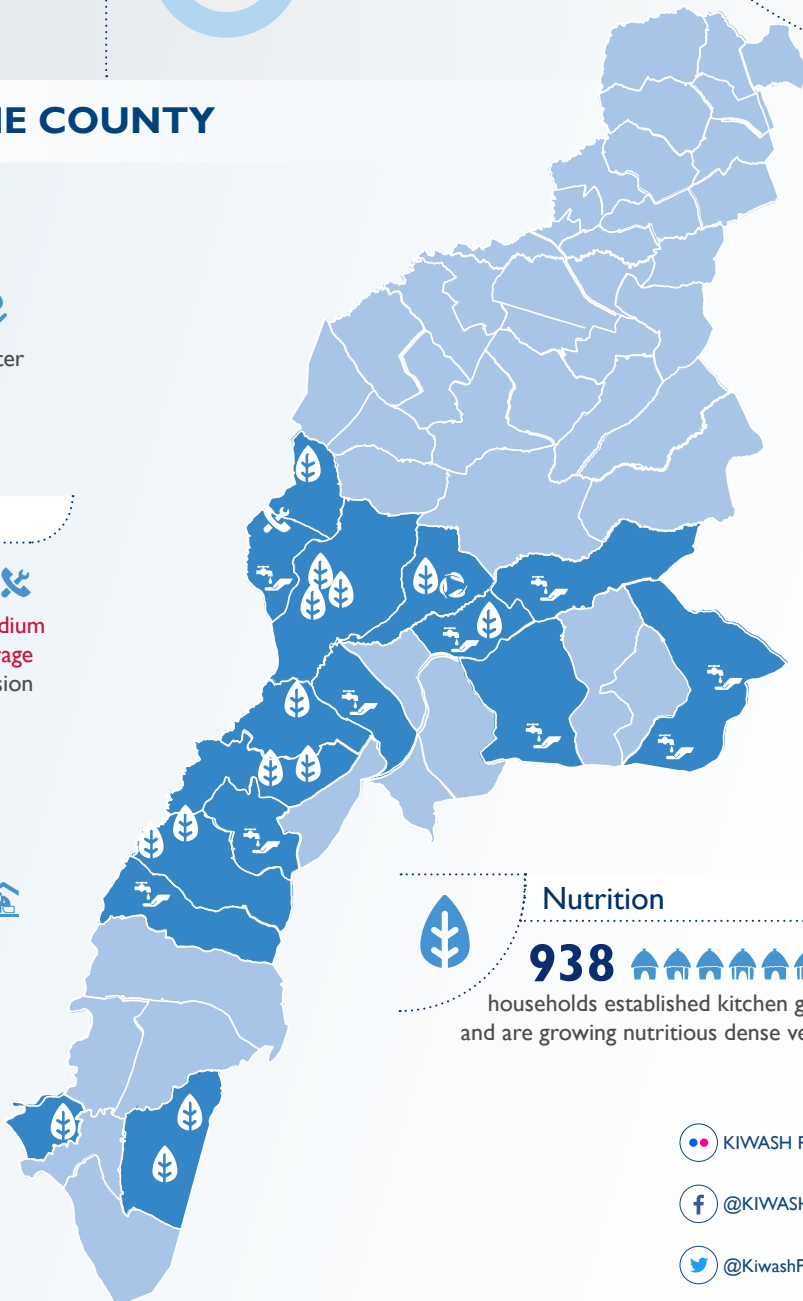
springs protected to improve water access  
and quality to **7,783 people**



### Nutrition

**938**

households established kitchen gardens  
and are growing nutritious dense vegetables



- KIWASH Project
- @KIWASHProject
- @KiwashProject